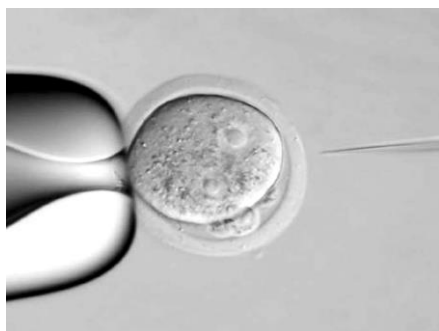
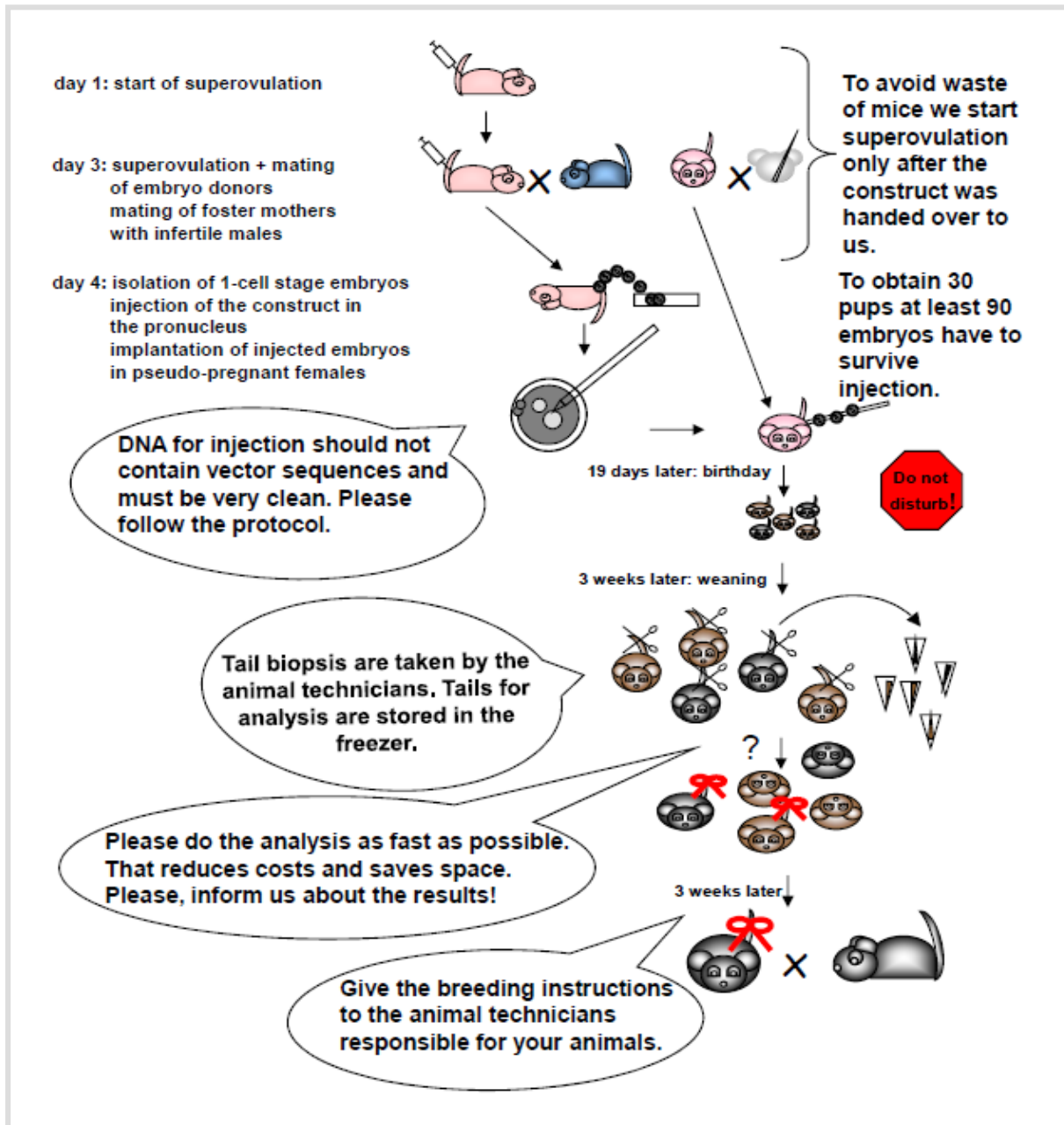


Injection of DNA/RNA or DNA+RNA into 1 cell stage embryos



is injected into the pronucleus

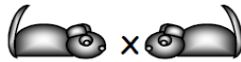


Injected embryos are transferred to the oviducts



Injection of ES cells into mouse blastocysts

day 1: mating of blastocyst donors

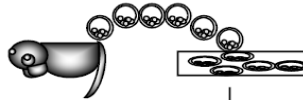


day 2: mating of foster mothers with infertile males



If your ES cells make trouble please inform us immediately!

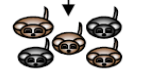
day 4: preparation of blastocysts
injection of ES cells
implantation of injected blastocysts into pseudo-pregnant foster mothers



Per construct two independent ES clones are injected and two foster mothers are implanted/clone.

For injection we do need 1/3 of a six well, gently trypsin treated and not triturated.

17 days later: birthday



We inform you about your mice (coat color/sex).

3 weeks later: weaning



Keep male mice > 70 % for breeding.

3 weeks later

Give breeding instructions to the animal technicians responsible for your mice and order wildtype mice for mating in time!



Tail biopsies are taken by the animal technicians. Tails for analysis are stored in the freezer.



3 weeks later



Please do the analysis as fast as possible. That reduces costs and saves space. Please inform us about your results!

